



Amat Sinar Lighting

Copper Luminaire

Your best partner of lighting solutions in Malaysia.

Summary

1. About ASL

Why Choose ASL?
Our History
Our Achievements
Our Partners

2. Our Factory

Our Team
Our Capability
Our Locations

3. Our Products

Product Portfolio

4. Brass Luminaires

Craftsman and Innovation
Our Benefits



About ASL

Why Choose Amat Sinar Lighting (ASL) ?

- **One-stop supplier**

Provides lighting, solar energy and IoT solutions

- **Share global supply chain risk**

Extended sourcing services for OTC products in the South Asia

- **Quality focus**

Quality Control Process aligned with industry leaders and UL/EU Directives, 3rd Party Quality inspection by SIRIM

- **Customer support**

Dedicated English-speaking team available 24/7

- **Delivery reliability**

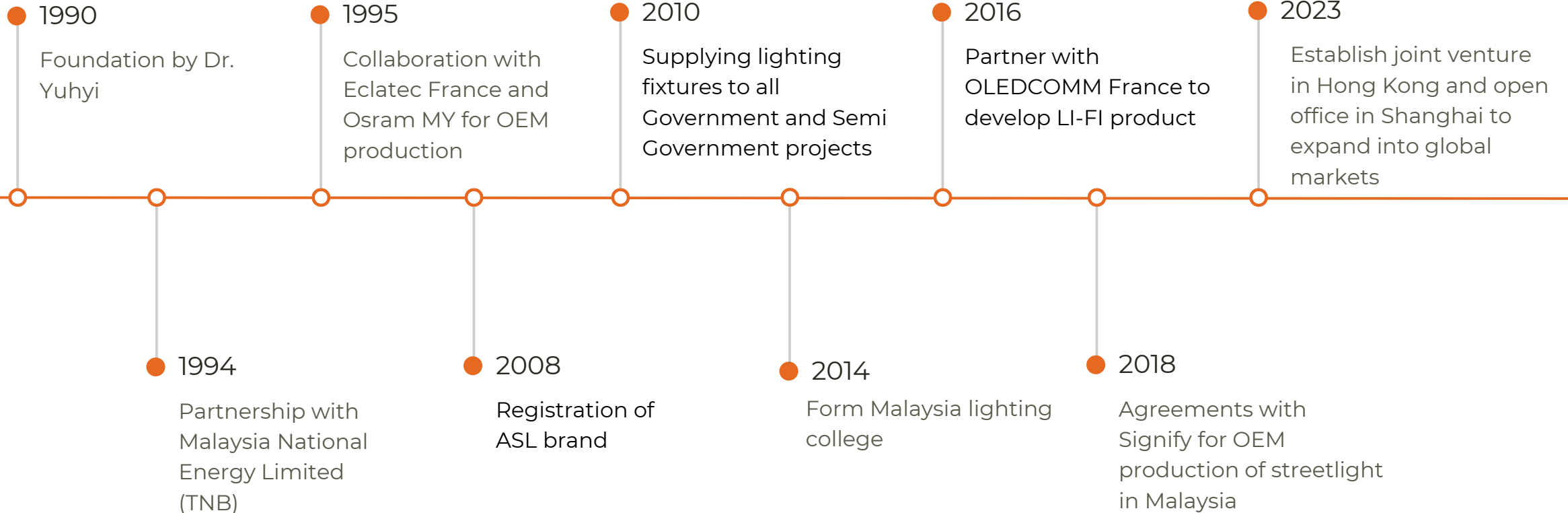
Strategic location near Malacca Strait to ensures fast & flexible delivery

- **IP protection**

100% ODM/OEM to protect customer intellectual property and product exclusivity

Our History

Recognitions and Milestones



Our Achievements

A Testament to Quality



Achieved ISO 9001 : 2008 And QAS certification



Appointed as lighting consultant company by Ministry of Finance (MOF)



IESNA sustaining member (Illumination Engineering Society of North America)



Committee Advisor for Standards and Industrial Research Institute of Malaysia (SIRIM)



MIESO member (Malaysia Illumination Engineering Society)



Develop Pilot project for Geographical Information System (GIS) Application and Hardware for Public Works Department (JKR)



MIESMA member (Malay Illumination Engineering Society of Malaysia)



Appointed as vendor by Public Works Department (JKR)

Our Partners

Trusted by Leading Organizations

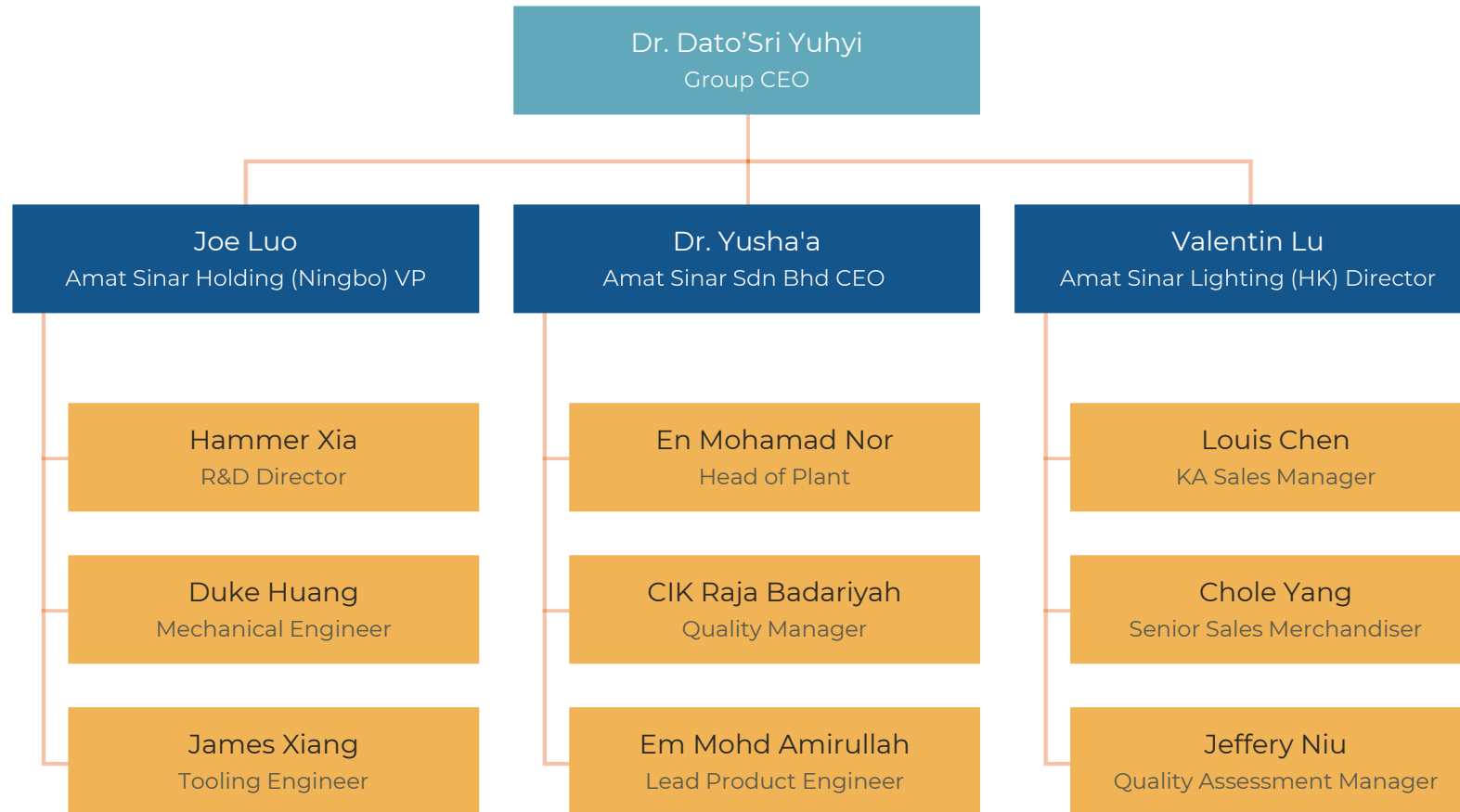




Our Factory

Our Team

The Pillars of Success



Our Capability

Luminaire Workshop

Excellence in Engineering



Die-Casting Division

10 die-casting machines ranging from 250T to 1250T, 30 sets of CNC machines for all die-casting parts



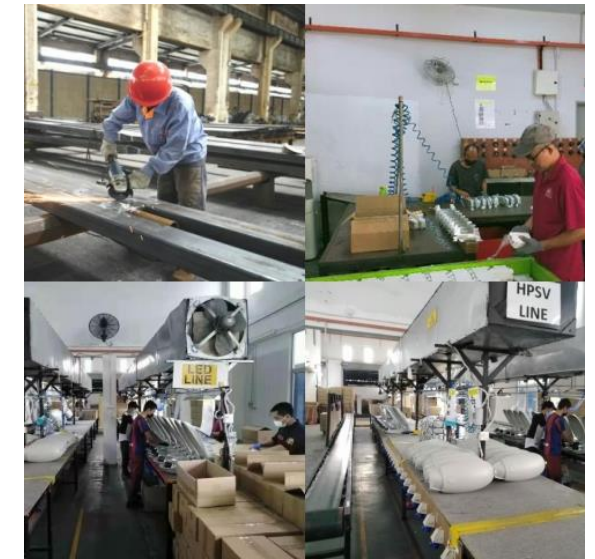
Electronic Assembly

4 high-speed SMT machines operate in a dust-free environment. 1 anti-static DIP workshop for electronic assembly



Surface treatment

2 auto powder-coating to process microwave flushing and sand blasting, 1 manual coating line to process acid pickling and parkerizing



Production Assembly

4 dedicated assembly lines ensure high production efficiency, 2 automatic aging test lines alongside the production

Test Center

Amat Sinar products undergo rigorous testing for electronic components, both in-house and in collaboration with the National Testing, Inspection, and Certification body SIRIM in Malaysia. Our testing center conducts:

1

Structure Tests: IP class, IK rating, Torque Test, Hurricane resistant, 6G vibration tests

2

Electronic Tests: EMC/EMI, surge protection, grounding resistance, ESD, high & low voltage tests

3

Material Tests: Including salt spray, coating layer thickness measurement, hardness, and magnetic particle tests

4

Reliability Test: High temperature and high humidity test, Power temperature cycle test, Low temperature start and operation test

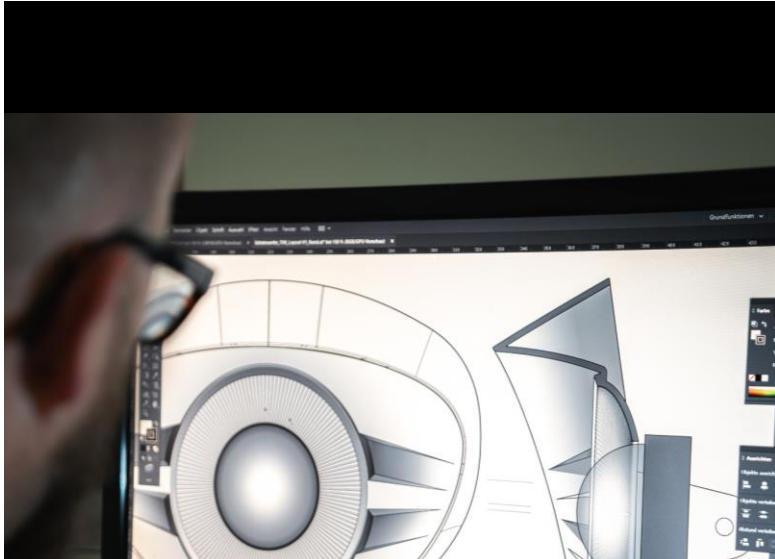
5

Optics Tests: Utilizing Integrating Sphere and full-field speed goniophotometers for spectrum and photometric test



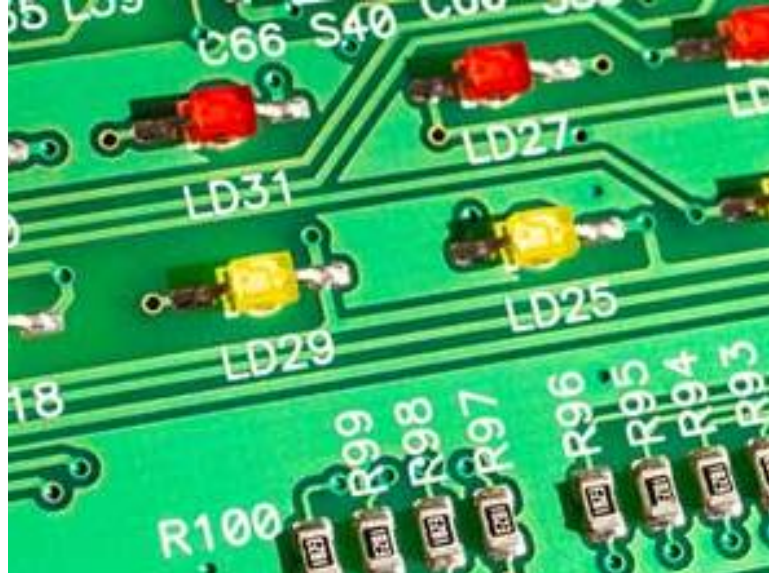
R&D Center

Preliminary Intergrated design based on customers' demands. Keep stable cooperation with oversea designers



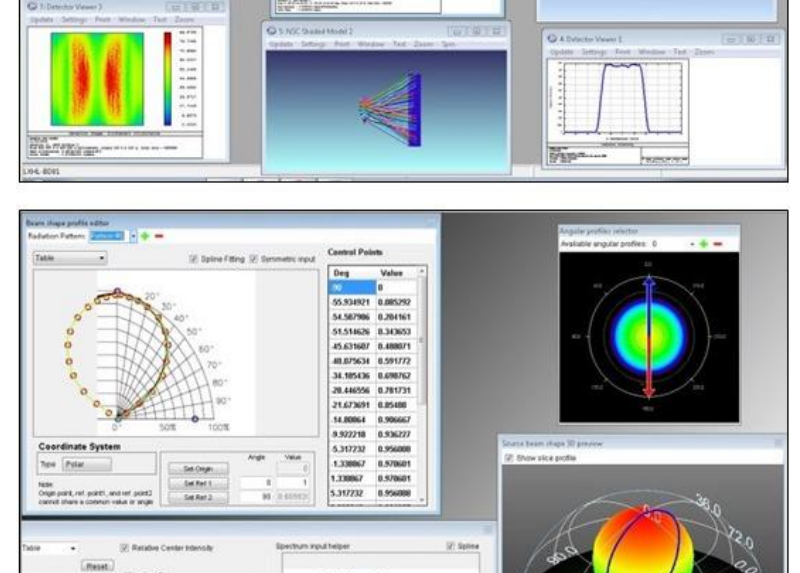
Structural & Mechanical Design

Skilled in application of 2D&3D design, modeling software, thermal analysis, structural stress analysis and mould tooling development with good quality and economical solution



Electronic Design

Ability to design LED PCBs, Drivers, SPD and master the technology of DALI, D4i, NB-IoT, LoRa and PLC. We combine the luminaire with different IoT and Sensor solutions to meet different application requirement

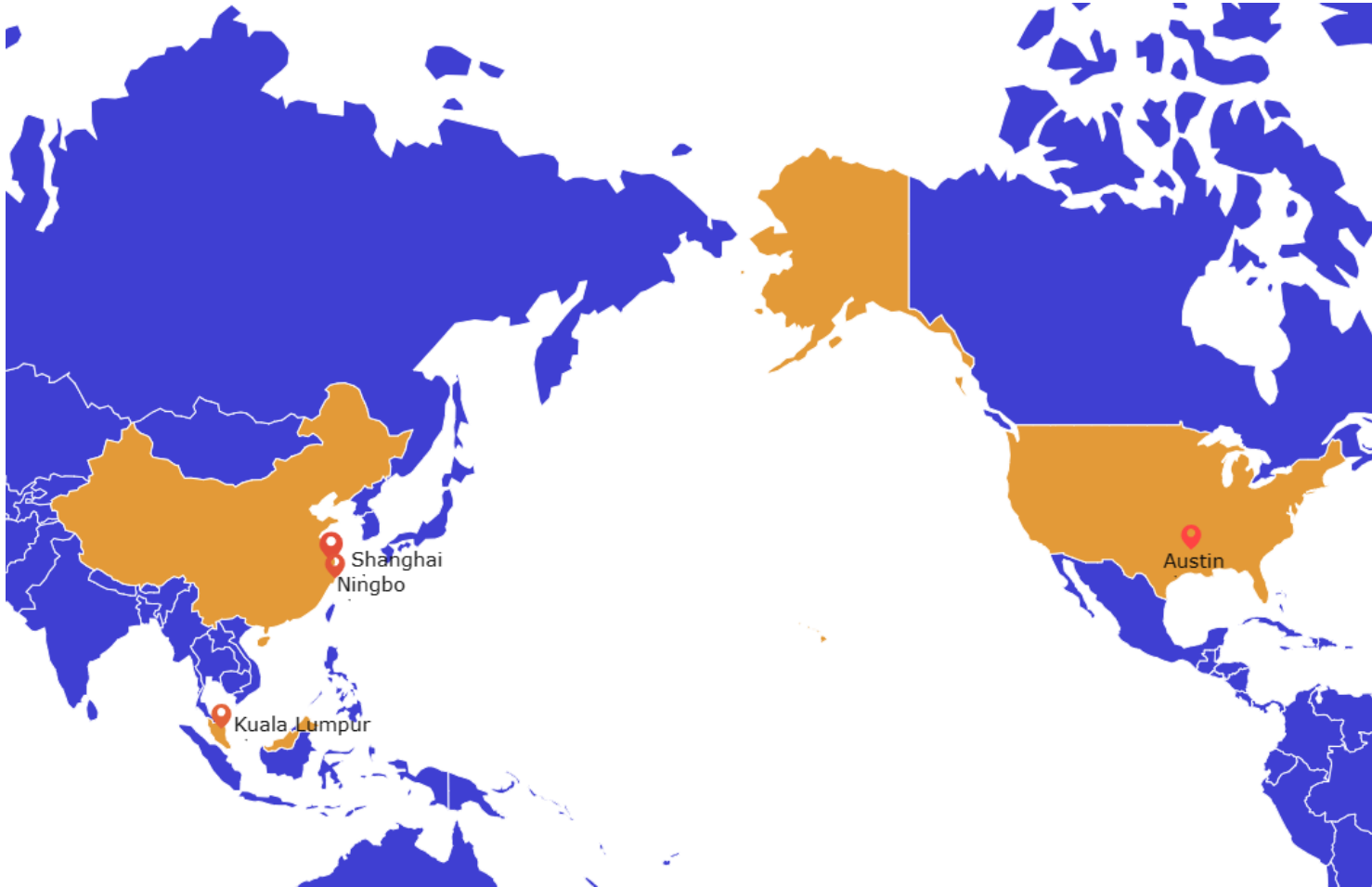


Optical Design

Lead by Dr. Yusha'a in PhD Optic Science, Amat Sinar has a professional optical design team for lighting fixtures. Designers skillfully apply software such as Dialux and Relux to simulate different lighting application

Our Locations

Connecting Globally



KUALA LUMPUR, MALAYSIA

Manufacture & Assembling Center, Professional & Commercial outdoor fixtures, mainly for USA & Canada, and parts of Southeast Asia Market

SHANGHAI, CHINA

Sales & Operation Center, sales communication, Key account management, merchandising and financial operation

NINGBO, CHINA

R&D and Testing Center, Components, Project Base Luminaires, ODM luminaires, strategic luminaires, etc

AUSTIN, USA

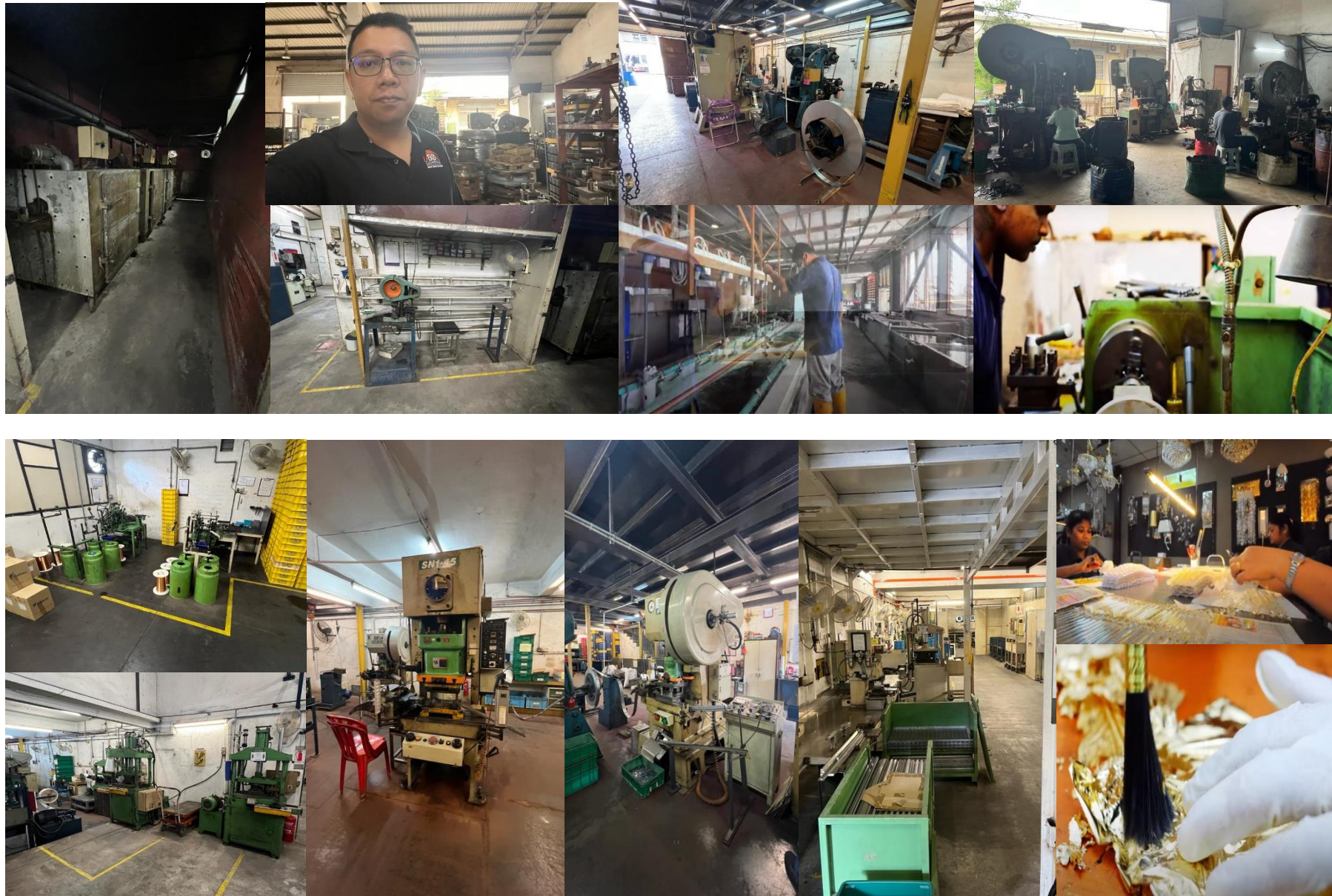
Distribution & Logistics Center for North America market, it will serve the US, Canada customers by 2024Q2



Brass Luminaires

Our Copper Workshop

Malaysian Traditional Craftsmanship

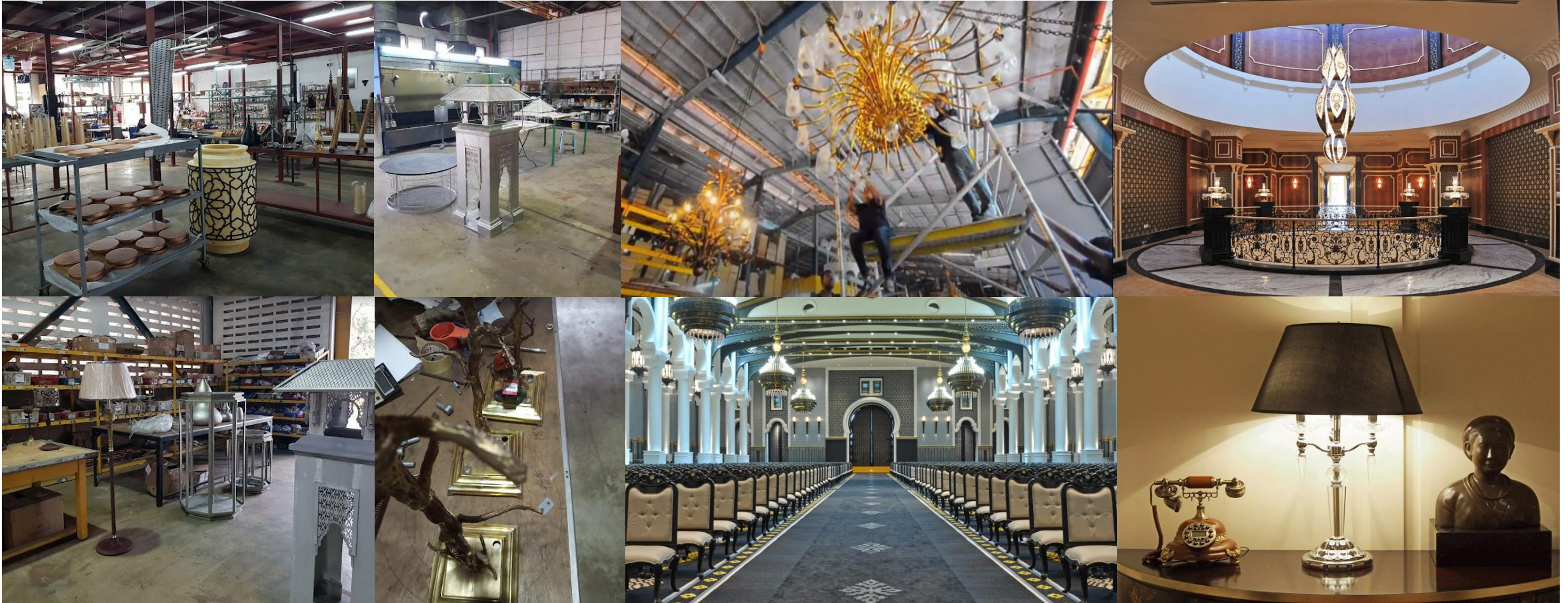


Metal Forming Process

Our skilled and experienced craftsmen employ a variety of mold tooling and compressive forming processes, including rolling, extrusion, stamping, bending, die forming, spinning, and more. They leverage their expertise and craftsmanship to achieve the precise design of each luminaire as specified by our customers.

We operate two brass tooling workshops and three metal forming workshops, as well as one machining workshop and one cladding workshop in Kuala Lumpur. Additionally, our in-house capabilities include one casting workshop, one forging workshop, and two machining workshops.

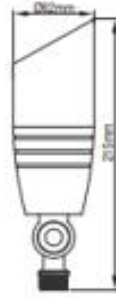
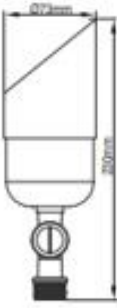
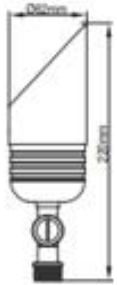
Wild Application



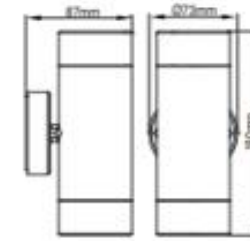
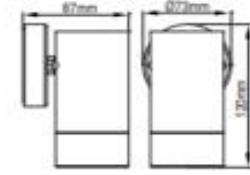
From the ambient glow of indoor décor lighting to the architectural accentuation of outdoor façade lighting, our brass and copper luminaires have illuminated spaces ranging from the grandeur of luxury hotel halls to the warmth of residential homes. They have adorned settings as diverse as Chinese temples and Muslim mosques, earning acclaim in both the domestic and international markets.

Our Product line

Spot Light



Wall Light



Material Options:
Aluminum / Brass

Finish: Antique Brass /
Machined Brass / Brushed
Brass / Polished Brass

Light Source: 5W G4 LED
bulb / 6W MR16 LED bulb /
10W LED Module

Lumens: 400lm (G4) / 800lm
(MR16) / 1000lm (LED module)

CCT: 2200-5000K

Voltage: AC 12V, 60Hz

Rating: IP54

Our Product line

Underwater Light

Material Options:
Aluminum / Brass

Finish: Antique Brass /
Machined Brass / Brushed
Brass / Polished Brass

Light Source: 10W MR16
LED bulb / 20W LED Module

Lumens: 1200lm (MR16)
/2000lm (LED module)

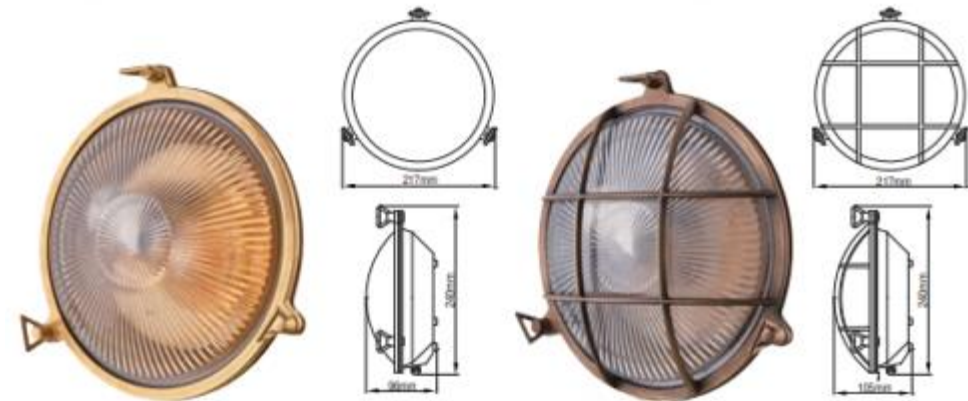
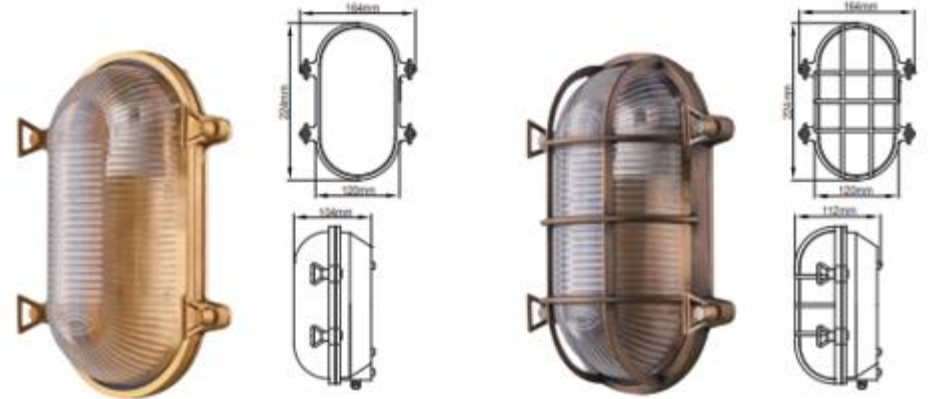
CCT: 2200-5000K

Voltage: AC 12V, 60Hz

Rating: IP54



Vandal Resistant



Our Product line



Material Options: Aluminum / Brass
Finish: Antique Brass / Machined Brass / Brushed Brass / Polished Brass
Light Source: 10W MR16 LED bulb / 20W LED Module
Lumens: 1200lm (MR16) / 2000lm (LED module)

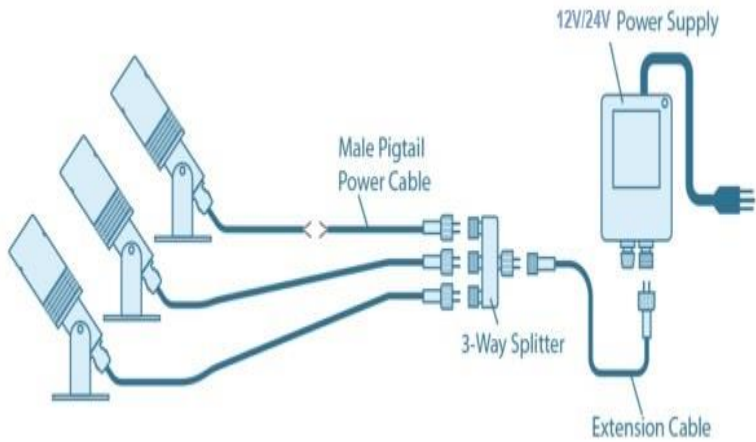
CCT: 2200-5000K
Voltage: AC 12V, 60Hz
Rating: IP54
Mount: Spike or Prone Stake

Our Copper & Brass Luminaires



New Technical Innovation

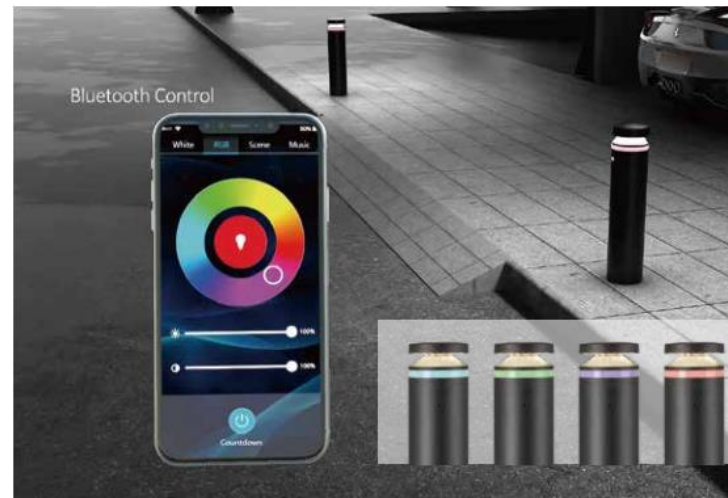
New technologies assists to upgrade the traditional luminaire



Low Voltage Central Powered System

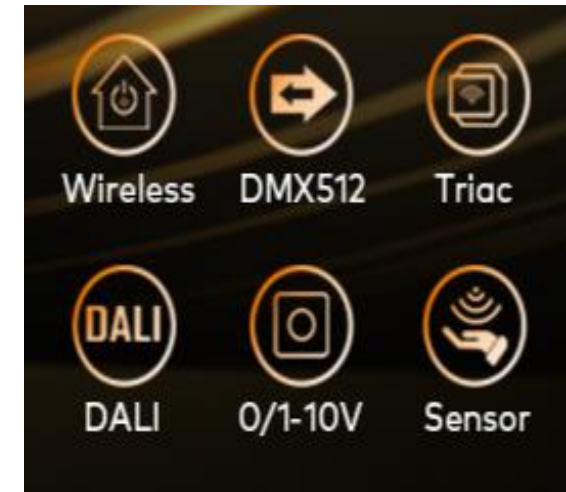
Skilled in application of 2D&3D design, modeling software, thermal analysis, structural stress analysis and mould tooling development with good quality and economical solution

RGB Control



RGB Tuning and Tunable White

Ability to design LED PCBs, Drivers, SPD and master the technology of DALI, D4i, NB-IoT, LoRa and PLC. We combine the luminaire with different IoT and Sensor solutions to meet different application requirement



Smart Connection Integrated

Lead by Dr. Yusha'a in PhD Optic Science, Amat Sinar has a professional optical design team for lighting fixtures. Designers skillfully apply software such as Dialux and Relux to simulate different lighting application

Low Voltage Landscape System



Extension cable
14/16/18AGW/meter
underground sun-resistant



Outdoor Low Voltage Landscape Lighting Transformer with Timer and Sensor, 120V AC Input to 12V AC Output



Outdoor Low Voltage Landscape Lighting Transformer in Stainless Steel case with Transparent plastic cover with Wifi / Bluetooth connection, 120V AC Input to 12V AC Output



Outdoor Linear Transformer with ON/OFF/AUTO photosensor/Timer 1-9hr setting, 120V AC Input to 12V AC Output



Toolless and Waterproof Fast connectors



✖ 6

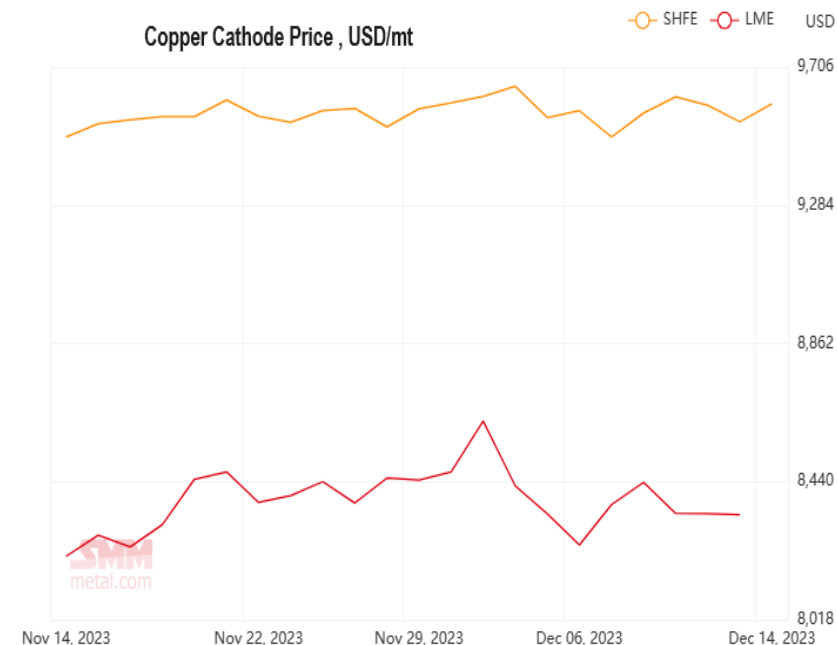


Typical Landscape System

1x60W Low voltage transformer with Wifi connection, 6x8W RGBW LED Copper spotlights, 1x extension cable(18AWG 50FT) with 6pcs quick cable connector

Our Benefits

Performance	Chinese Manufacturer	Amat Sinar Lighting MY
Copper raw material price	SHFE price: 9635 USD/ton	LME price: 8205 USD/ton <input checked="" type="checkbox"/>
Metal Craftsmanship	Extensive years of experience and practice <input checked="" type="checkbox"/>	Extensive years of experience and practice <input checked="" type="checkbox"/>
Intellectual Propriety Protection	Limited by local law, not subject to international arbitration, high regional competition	Adheres to international laws with the capability for international arbitration, low competition nationally <input checked="" type="checkbox"/>
Technical Innovation	Predominantly traditional light sources, constraints on advanced smart connection technologies, concerns with cybersecurity	Exclusively LED modular engines, partnerships with global brands for cutting-edge smart technologies, robust cloud service security <input checked="" type="checkbox"/>
US Custom duties	Additional 25% tax on Chinese imports	No additional import duties <input checked="" type="checkbox"/>
Delivery time to US	38-45 days to West Coast, 45-60 days to East Coast	25-34 days to West Coast, 38-45 to East Coast <input checked="" type="checkbox"/>
Communication	Often requires Chinese translation for factory communication	English as the official secondary language, fluent at the operator level <input checked="" type="checkbox"/>
Customer Service	Purely FOB business model, with no after-sales service provided in the USA	Presence of a local US agent capable of handling customer claims, maintaining local inventory, and managing logistics <input checked="" type="checkbox"/>



SMM 1# Copper Cathode Price , USD/mt
 Copper silver content ≥ 99.95%
 13% VAT included
 Traded price, taking delivery at designated warehouse
 GB/T 467-2010 Copper cathode

Avg.: **9,634.97** +22.51 (+0.23%)

LME Copper Official Prices		
CONTRACT	BID	OFFER
Cash	8204.50	8205.00

Date: 2023/12/15 Source :

[SMM Metal Market](#)

[London Metal Exchange](#)



Thank You

Presented by Valentin LU